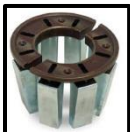


Crimper S2M



Technical Data

Modell:	S 2 M
Crimp force (kN/Ton)	900/90
Greaseless	✓
Control	Control A (Micr.)
SAE R 12 / 4SP* 1 piece fitting	1¼ "
SAE R 12 / 4SP* 2 piece fitting	1 "
Industrial*	1¼ "
90° Elbows*	1 "
Max. Crimp range	63 mm
Opening	+22 mm
Opening without dies	77 mm
Type of dies	263
Speed (mm/sec.)	
Close	-
Crimp	-
Open	-
Drive	Manuell
Oil	0.75 l
L x W x H Machine (mm)	500 x 420 x 440
Weight	33 Kg



17mm



20mm



24mm



32mm



40mm



Greaseless



Universal



Ecoline



CE Conform



2-year warranty